

IBM 1440 PROJECT PARTNERS

Restoration of the IBM 1440 system is a collaboration between IBM Archives, led by Paul Lasewicz, and the Center for Technology & Innovation (CT&I), per IBM Corporate Archives Loan Agreement 2010.1. Components on loan to CT&I include:

IBM 1441 - Central Processing Unit

IBM 1447 - Console with typewriter

IBM 1311 - Disk Drive, with disk packs

System & Installation Documentation

Donation of an IBM 1442 Card Reader Punch to CT&I was made possible through the efforts of Robert Garner, IBM Almaden Research Laboratory. The 1442 was developed in parallel with the 1311, whose interchangeable magnetic disk storage made possible data transfer between machines.

CT&I SUPPORTERS

With generous support from the Community Foundation of South Central New York, Millard S. and Adelaide S. Gaffney Foundation, Gertrude E. Skelly Charitable, Foundation, the family and friends of Stanley I. Hayes, Sr., the 321 Building Crew led by Chuck Goodwin, A Frame Shoppe, Alpha Psi Omega (Binghamton University chapter), W. L. Kline, Plumbers & Pipefitters Local #112, Schuler Haas, and Sentry Alarm, CT&I's facility is secure, handicapped accessible, and warm.

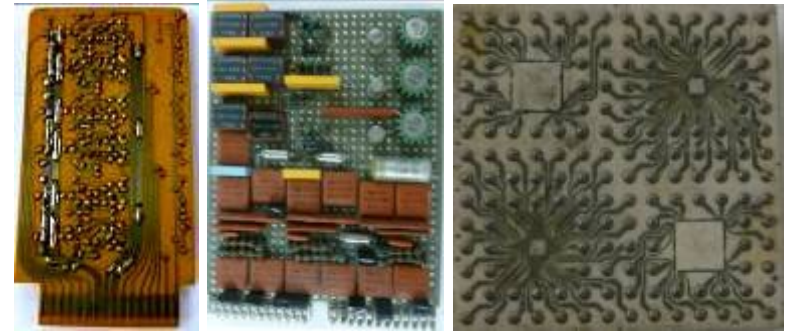
EVENT SPONSORS

Rod Adkins, Senior VP, IBM Systems & Technology Group
Jon Iwata, IBM Senior VP, Marketing & Communications



an IBM Premier Business Partner

Thank you all.



Celebrating the IBM 1400 Family

A half-century of Technology,
Systems, and Innovation
and the people who
made it happen.

November 24, 2012



Center for Technology & Innovation
321 Water Street, Binghamton, NY

WHAT'S HAPPENING -- WHEN & WHERE

Ice Cream Manufacturing (upper level) **11AM - 1PM**

IBM 1440 in action

Test your skills against the ability of a ton of 50 year old hardware with 8 Kb of memory to solve math problems. Talk with the 1440 restoration team.

IBM Blood Cell Processor in action

Alan Jones demonstrates the IBM Glendale technology pioneered 40 years ago that is used in hospitals today.

50 years of Printed Circuit Technology on display

Today's Technology Advances from Endicott Interconnect, Universal Instruments, Watson School of Engineering,

*** LINE UP TO BE CONFIRMED ***

Prototype Workshop (ground level) **11AM - 1PM**

Fly a Link "Blue Box" trainer and bend a giant paper clip.

Prototype Workshop Theater Schedule

11:00 Birthplace of Virtual Reality at 183-5 Water Street, Binghamton, NY, 2010, a CT&I mini-documentary. (10 min)

11:10 Smartest Machine on Earth, 2011, PBS/NOVA presents the story of how the IBM Deep Q/A team developed and trained Watson to become Jeopardy Champ. (55 min)

12:05 Smartest Machine on Earth (55 min)

1:30 Desk Set, 1957, Spencer Tracy develops Emily EMARAC, played by an IBM computer, who matches wits with Bunny Watson, played by Katherine Hepburn. (103 min)

3:15 Birthplace of Virtual Reality (10 min)

3:30 Smartest Machine on Earth (55 min)

4:30 Birthplace of Virtual Reality (10 min)

REFLECTIONS & RECOGNITION of IBM Endicott's pioneering advances in the Printed Circuit Era

1PM - 3PM

Welcome Roger Westgate, CT&I Board President
Watson School of Engineering, Binghamton University

Introduction of CT&I's IBM1440 Restoration Team

Fred Petras, Charlie Davis, Gary DeBlieck, Bill Green, Carl Mosher, John Westerman, with help from John Adrejack, Dick Ault, Max Briner, Stacy Castillo, Don Crandall, Bill Davis, Vince Fiacco, Dale Harrison, Nick Heckman, Kishen Kapur, Manfred Keber, Don Manning, Mattco Electric, Jud McCarthy, Don McCarty, Stan Paddock, Don Rex, Gerry Schrag, Don Seraphim, Mike Tarcha, & John Wiley.

Thanks to the Managers of Invention

Don Seraphim. CT&I Board Secretary

Solid State Recollections - Technology, Products, Systems, and People, with highlights of Chuck Branscomb's June 2012 remarks, and an interactive discussion led by Jud McCarthy, President, S. Florida IBM Quarter Century Club

Mainframes Today - System Z Enterprise - Len Santalucia, Chief Technology Officer, Vicom Infinity, Inc.

IBM Looks Forward - Michael J. Cadigan, General Manager, IBM Microelectronics Division

CT&I Looks Forward - Roger Westgate, Board President

3 - 5 PM RECEPTION

Conversation continues over beverages, ice cream, and pizza from New York Pizzeria, koleches from Czech Please, and circuit board cakes Baked by Camille.